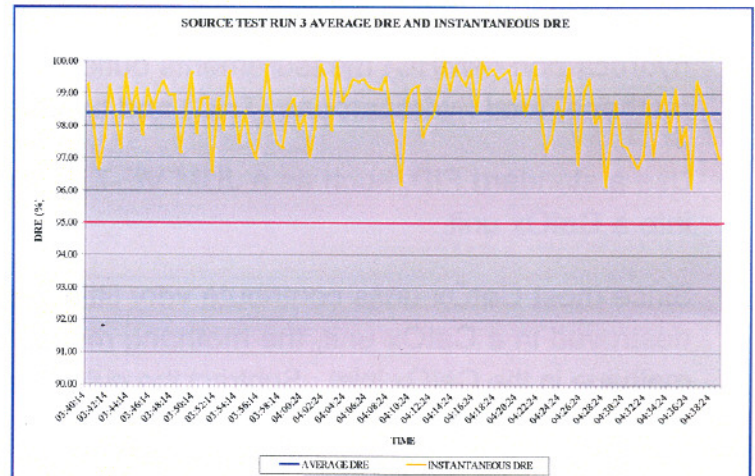
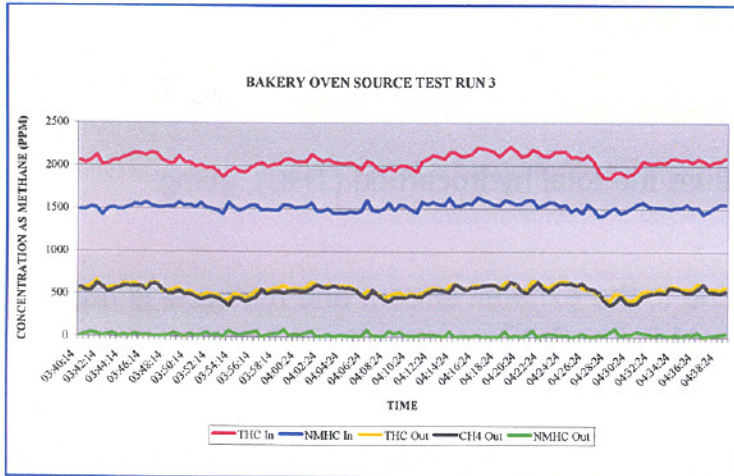
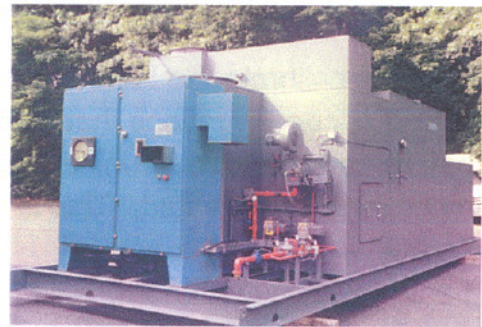


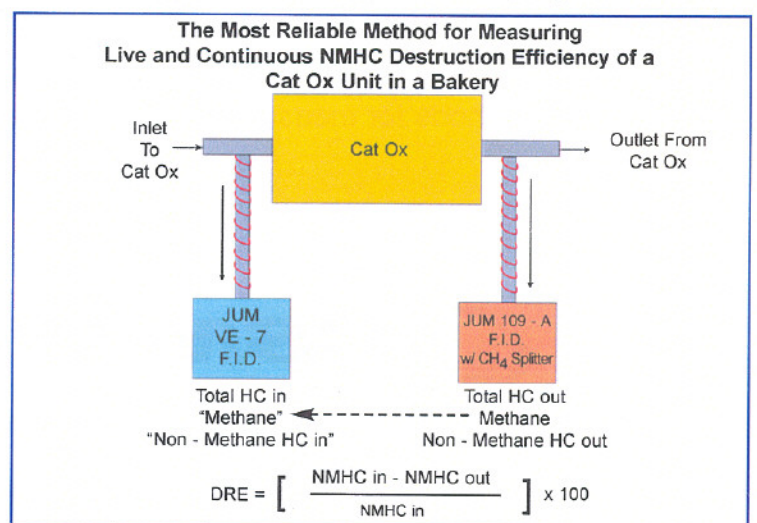
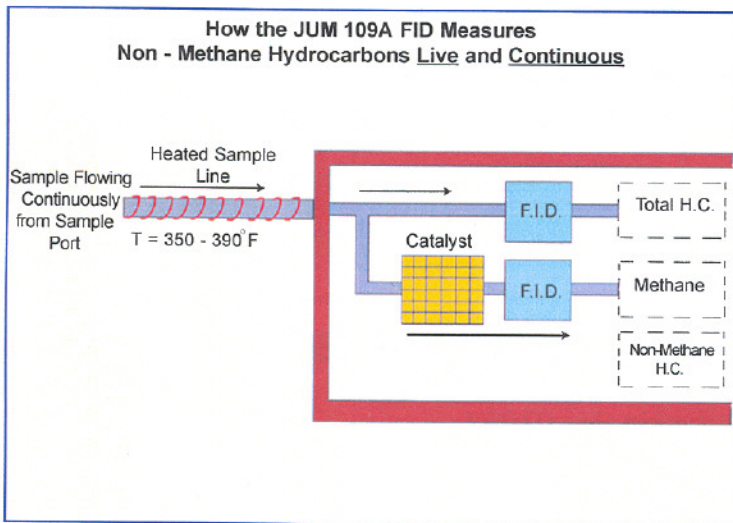
# FID WITH METHANE SPLITTER TO MEASURE LIVE AND CONTINUOUS NMHC DESTRUCTION EFFICIENCY ACROSS CATALYTIC OXIDIZERS (CATOX)



JUM base 109 A - Live and Continuous Measurement of NMHC



CSM Catalytic Oxidation System for Bakery Oven Emission Control achieves greater than 95% destruction of Non-Methane hydrocarbons



# METHOD 25A USING FID WITH METHANE SPLITTER TO MEASURE LIVE AND CONTINUOUS NMHC DESTRUCTION EFFICIENCY ACROSS CATALYTIC OXIDIZERS (CATOX)

- JUM 109A FID (Flame Ionization Detector) with methane splitter gives excellent non-methane hydrocarbon (NMHC) measurements outlet of CatOx units. Use this instrument to measure methane, total hydrocarbons (THC) and by difference NMHC in the CatOx outlet stream.
- Use a standard FID, such as a JUM VE-7, to measure the total hydrocarbon (THC), going into a CatOx unit.
- Since most CatOx units contribute very little methane to the exhaust stream and methane is not destroyed in a CatOx unit, the methane measurement in the CatOx outlet can be used as the methane in the CatOx inlet. Subtract the outlet methane from the inlet THC to get the inlet NMHC.
- Always use a heated sample line at a minimum temperature of 350F on both FID's to assure no condensation of sample takes before it enters the detector.
- Before testing, calibrate the FID's with methane and a representative gas containing compounds being tested at concentrations that cover the range of concentration being tested. At the end of each test, re-calibrate to determine measurement signal drift. If significant drift is detected, the test may have to be repeated. This is unusual, but occurs occasionally.
- Testing in the field is fast and reliable, with immediate feedback of results. This technique is so responsive that it permits corrective action to be taken and retest if a problem is detected in either the CatOx unit or the testing equipment.
- Eliminate the cost of a "bad test"! This testing technique will have a somewhat higher initial cost than other methods for measuring NMHC. However, the overall cost is much less expensive.



**CSM Worldwide**

269 Sheffield St. ▪ Mountainside, NJ 07092  
Tel.: 908-233-0991 ▪ Fax: 908-233-1064  
[www.csmworldwide.com](http://www.csmworldwide.com)